



ICY BOX IB-CR402-C31

External USB 3.1 (Gen 2) Type-C™ CFAST 2.0 card reader

Key features

- Made of high-grade aluminium
- Interface to host computer: USB 3.1 (Gen 2) Type-C™ / -A, up to 10 Gbit/s
- Supports CFAST 2.0 / CFAST 1.1 / CFAST 1.0 memory cards with up to 6 Gbit/s
- Downwards compatible to USB 3.0 and USB 2.0
- LED for power and access
- Supports Windows® and macOS®



Packing content

1x IB-CR402-C31, 1x Type-C™ to Type-C™ cable, 1x Type-C™ to Type-A cable, 1x carrying pouch, 1x cable tie, 1x quick installation guide

Developed for professionals

Filling a void that needed to be filled, is this, the first ever CFAST 2.0 card reader from ICY BOX. The IB-CR402-C31 has been designed to handle the high-resolution files that CFAST compatible cameras put out, with remarkable speed, so as to keep up to pace with the professionals that are using them.

Technical data

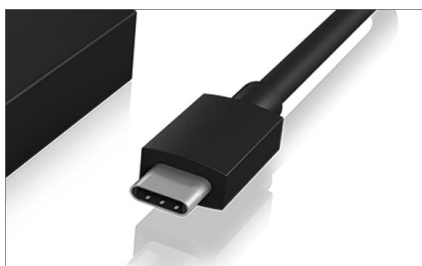
Model	IB-CR402-C31
Article No.	60515
EAN code	4250078168973
Brand	ICY BOX
Colour	Black
Material	Aluminium
USB Interfaces	USB 3.1 (Gen 2) Type-C™

Card slot	CFAST 2.0 (SATA III)
Transfer rate	Up to 6 Gbit/s
Power supply	Bus powered
Plug & Play	Yes
Operating system	Windows®, macOS®

**ICY BOX®**www.raidsonic.de

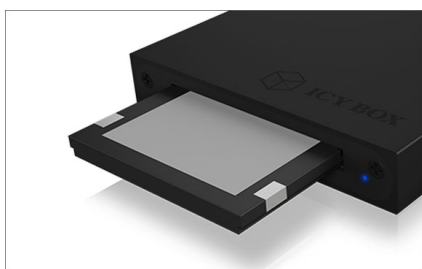
ICY BOX **IB-CR402-C31**

External USB 3.1 (Gen 2) Type-C™ CFast 2.0 card reader



The new standard

USB Type-C™ ports have two distinct advantages over the existing forms. They are smaller and therefore ideal for thin laptops and mobile devices and it is no longer necessary to insert the connector in a particular orientation. It always fits and thus saves the user a lot of small annoyances when connecting devices.



No additional grey hairs

Professionals in today's television, film and photo industries rely on CFast's high transfer rates to capture their photos and videos. The IB-CR402-C31 meets these high requirements and allows you to fully exploit the performance of your CFast card when transferring it to your computer.



The helper for filming outside

With a USB 3.1 (Gen 2) interface and CFast 2.0 standard, transfer rates of up to 6 Gbit/s are possible, while the reader is backwards compatible with USB 3.0 and 2.0. Whether you are shooting high-res photos or videos, this portable card reader will be prepared to handle them with ease - anywhere!

Logistical data

Packing unit: 40 pcs/carton
Total weight: 7.1 kg/carton
Gross weight (with packing): 0.162 kg
Net weight: 0.061 kg

Dimension/carton: 500x220x300 mm
Dimension (with packing): 25x100x200 mm
Dimension of article: 53x65x10 mm
Country of origin: China