

Thermaltake View 51 TG ARGB Full tower

- **Style : Simple**
- **Size : Full-Tower supports up to E-ATX MB**
- **Material : Steel & Plastic & Tempered Glass**
- **Main Feature**

- ✓ **Connection : Top- front I/O ports with 2 x USB 3.0, 2 x USB2.0, 1 x Type-C**
- ✓ **Ventilation : 2 preinstalled 200mm ARGB fan
1 preinstalled 120mm ARGB fan**
- ✓ **Expansion : 2 drive bays with modular drive racks design**
- ✓ **Support : LCS & Advance Cable Management**



Thermaltake View 51 TG ARGB Full tower

• Specification

Model	View 51 TG	View 51 TG Snow
P/N	CA-1Q6-00M1WN-00	CA-1Q6-00M6WN-00
Case Type	Full Tower	
Chassis Dimension (H*W*D)	550 x 315 x 525 mm (21.65 x 12.4 x 20.67 inch)	
Net Weight	14.95 kg / 32.96 lb	
Side Panel	3 x Tempered Glass (4mm thickness)	
Color	Exterior & Interior : Black	Exterior & Interior : White
Material	SPCC	
Cooling System	Front (intake) : 2 x 200 x 200 x 30mm Addressable RGB fan (600rpm, 24dBa) Rear (exhaust) : 1 x 120 x 120 x 25mm Addressable RGB fan (1000rpm, 27.2 dBA)	
Drive Bays		
-Accessible	;2 x 2.5" (With HDD Bracket)	
-Hidden	2 x 3.5" or 2.5" (With HDD Cage)	
Expansion Slots	8	
Motherboards	6.7" x 6.7" (Mini ITX), 9.6" x 9.6" (Micro ATX), 12" x 9.6" (ATX), 12" x 10.5" (E-ATX)	
I/O Port	1 x Type-C, 2 x USB 2.0, 2 x USB 3.0, 1 x HD Audio, 1 x RGB Button	
PSU	Standard PS2 PSU (optional)	
Fan Support	Front: 2 x 200mm or 1 x 200mm 3 x 140mm or 2 x 140mm or 1 x 140mm Top: 3 x 120mm or 2 x 120mm or 1 x 120mm 3 x 140mm or 2 x 140mm or 1 x 140mm 3 x 120mm or 2 x 120mm or 1 x 120mm Rear: 1 x 120mm , Right: 3 x 120mm or 2 x 120mm or 1 x 120mm Front: 2 x 360mm or 1 x 240mm or 1 x 120mm Bottom: 3 x 280mm or 2 x 140mm or 1 x 120mm Top: 1 x 360mm or 1 x 240mm or 1 x 120mm 1 x 280mm or 1 x 140mm Right: 1 x 360mm or 1 x 240mm or 1 x 120mm 1 x 280mm or 1 x 140mm Bottom: 1 x 360mm or 1 x 240mm or 1 x 120mm	
Radiator Support		
Clearance	CPU cooler height limitation: 175mm VGA length limitation: 300mm(With Water Pump) 440mm(Without Water Pump) PSU length limitation: 200mm	

Thermaltake View 51 TG ARGB Full tower

•Packaging

Package Information	Black	White
EAN Code	4713227523868	4713227523851
UPC Code	841163073872	841163073865
N.W	14.95 kg / 32.96 lb	14.95 kg / 32.96 lb
G.W	17.62 kg / 38.85 lb	17.62 kg / 38.85 lb
Carton Size (L x W x H)	604 x 382 x 621 mm / 23.78 x 15.04 x 24.44 inch	
Cuft	5.06	
Container	w/o pallet	
20'	201 pcs	
40'	411 pcs	
40' HQ	487 pcs	



Thermaltake View 51 TG ARGB Full tower

• Appearance – Window (View 51 TG ARGB)



Angle view



Left Side view



Front view



Right Side view



Internal Structure



Rear view



Top view



Bottom view

Thermaltake View 51 TG ARGB Full tower

- **Unique Design**



Maximum fan support
up to 4 x 200mm



Maximum radiator
support up to 360mm

Thermaltake View 51 TG ARGB Full tower

- **Unique Design**



3 Tempered Glass Window



Unique Design for LCS Drain



Tool-free door lock design



USB Type-C connector

Thermaltake View 51 TG ARGB Full tower

•RGB Switch Mode



External RGB switch



Built-in ARGB controller board

Thermaltake View 51 TG ARGB Full tower

- **Ventilation (View 51 TG ARGB)**



Two 200mm front ARGB fans



One 120mm rear ARGB fan

Thermaltake View 51 TG ARGB Full tower

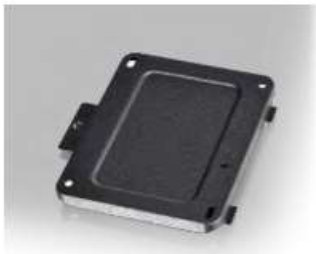
• Structure (Internal)



2 x 2.5" HDD Rack



2.5" x 2 or 3.5" x 2



Thermaltake View 51 TG ARGB Full tower

•The Cooling System – DIY Liquid Cooling (Optional)



Thermaltake View 51 TG ARGB Full tower

• The Cooling System – AIO Cooling (Optional)



Thermaltake View 51 TG Snow ARGB Full tower

• Appearance – Window (View 51 TG Snow ARGB)



Angle view



Left Side view



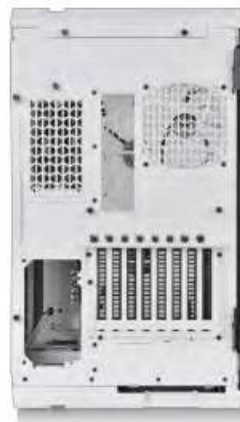
Front view



Right Side view



Internal Structure



Rear view



Top view



Bottom view

Thermaltake View 51 TG Snow ARGB Full tower

- **Unique Design**



Maximum fan support
up to 4 x 200mm



Maximum radiator
support up to 360mm

Thermaltake View 51 TG Snow ARGB Full tower

• Unique Design



3 Tempered Glass Window



Unique Design for LCS Drain



Tool-free door lock design



USB Type-C connector

Thermaltake View 51 TG Snow ARGB Full tower

- RGB Switch Mode



External RGB switch



Built-in ARGB controller board

Thermaltake View 51 TG Snow ARGB Full tower

- **Ventilation (View 51 TG Snow ARGB)**



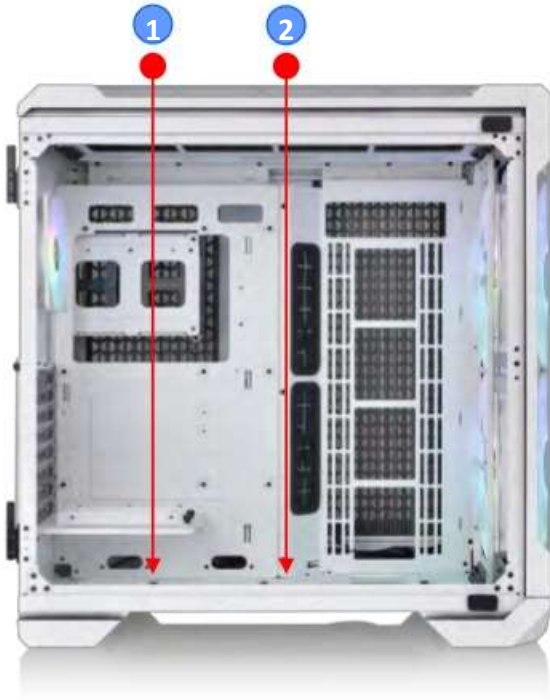
Two 200mm front ARGB fans



One 120mm rear ARGB fan

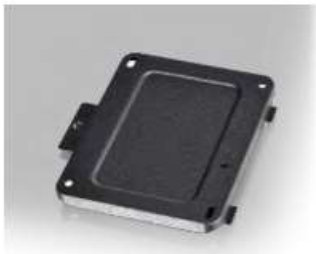
Thermaltake View 51 TG Snow ARGB Full tower

• Structure (Internal)



2 x 2.5" HDD Rack

2.5" x 2 or 3.5" x 2



Thermaltake View 51 TG Snow ARGB Full tower

• The Cooling System – DIY Liquid Cooling (Optional)



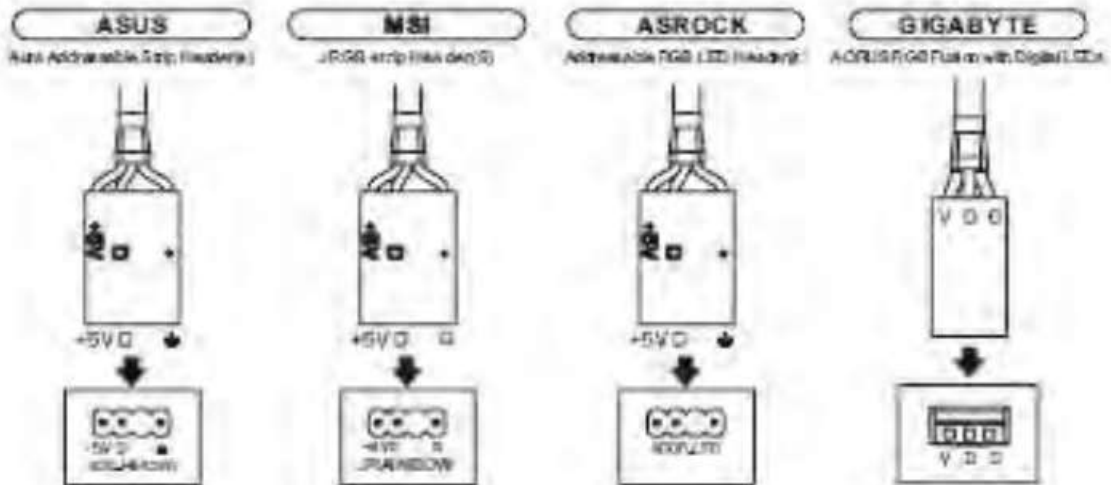
Thermaltake View 51 TG ARGB Full tower

•RGB Switch Mode

VO Port



How to connect MB



•RGB Switch Mode

Sync with Motherboard RGB Software

Designed to synchronize with ASUS Aura Sync, GIGABYTE RGB Fusion, MSI Mystic Light Sync and AsRock Polychrome. It supports motherboards that have a 5V addressable RGB header, allowing you to control the lights directly from the above-mentioned software without installing any extra lighting software or controllers. For more details, please visit ASUS, GIGABYTE, MSI and AsRock official websites.

*Caution: the motherboard signal connector only supports 5V header.



Aura Addressable Header

ASUS



Digital Pin Header

GIGABYTE



JRAINBOW Header

MSI



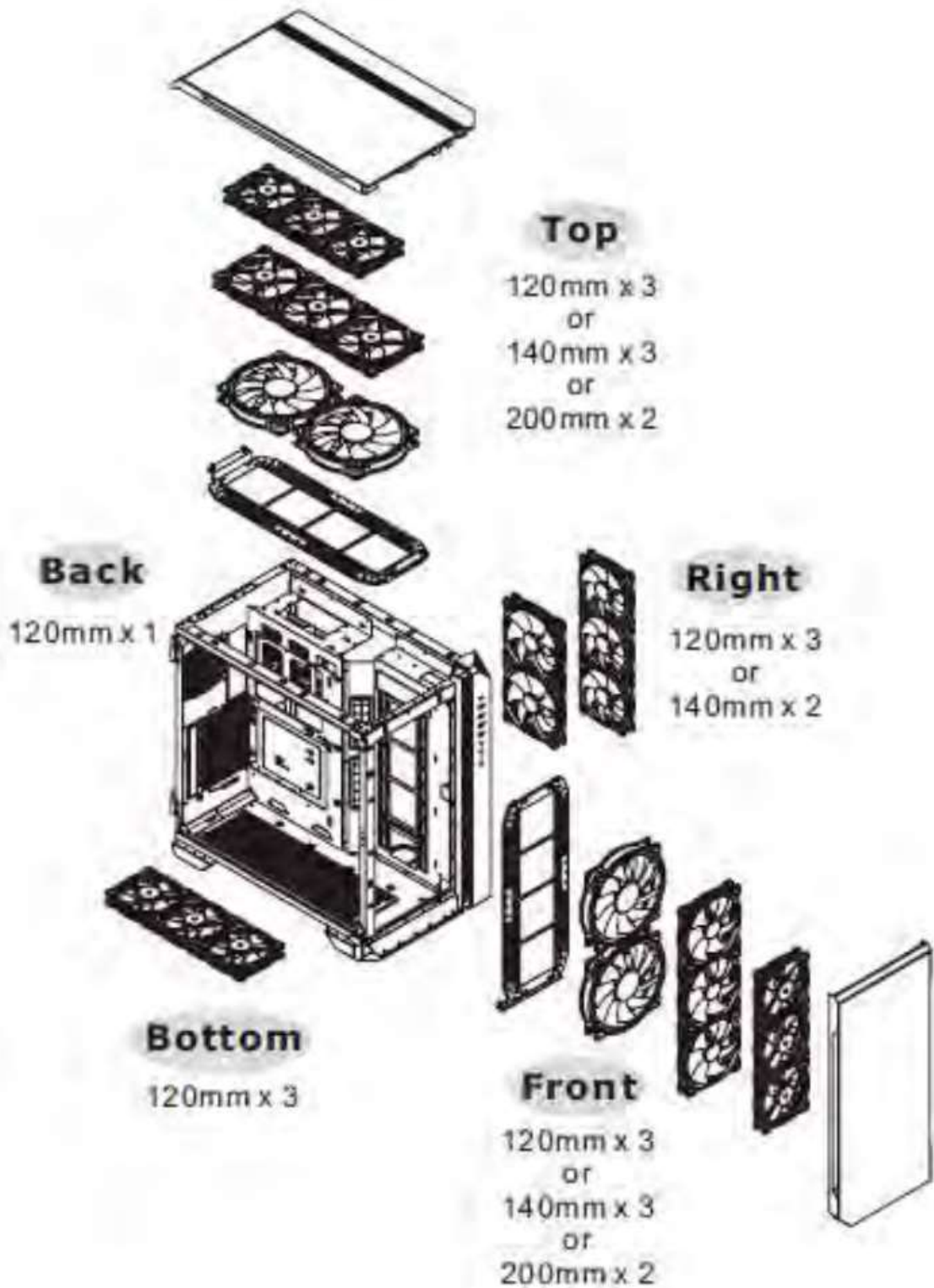
Addressable RGB LED Header

ASRock

*Caution: the motherboard signal connector only supports 5V header.

Thermaltake View 51 TG ARGB Full tower

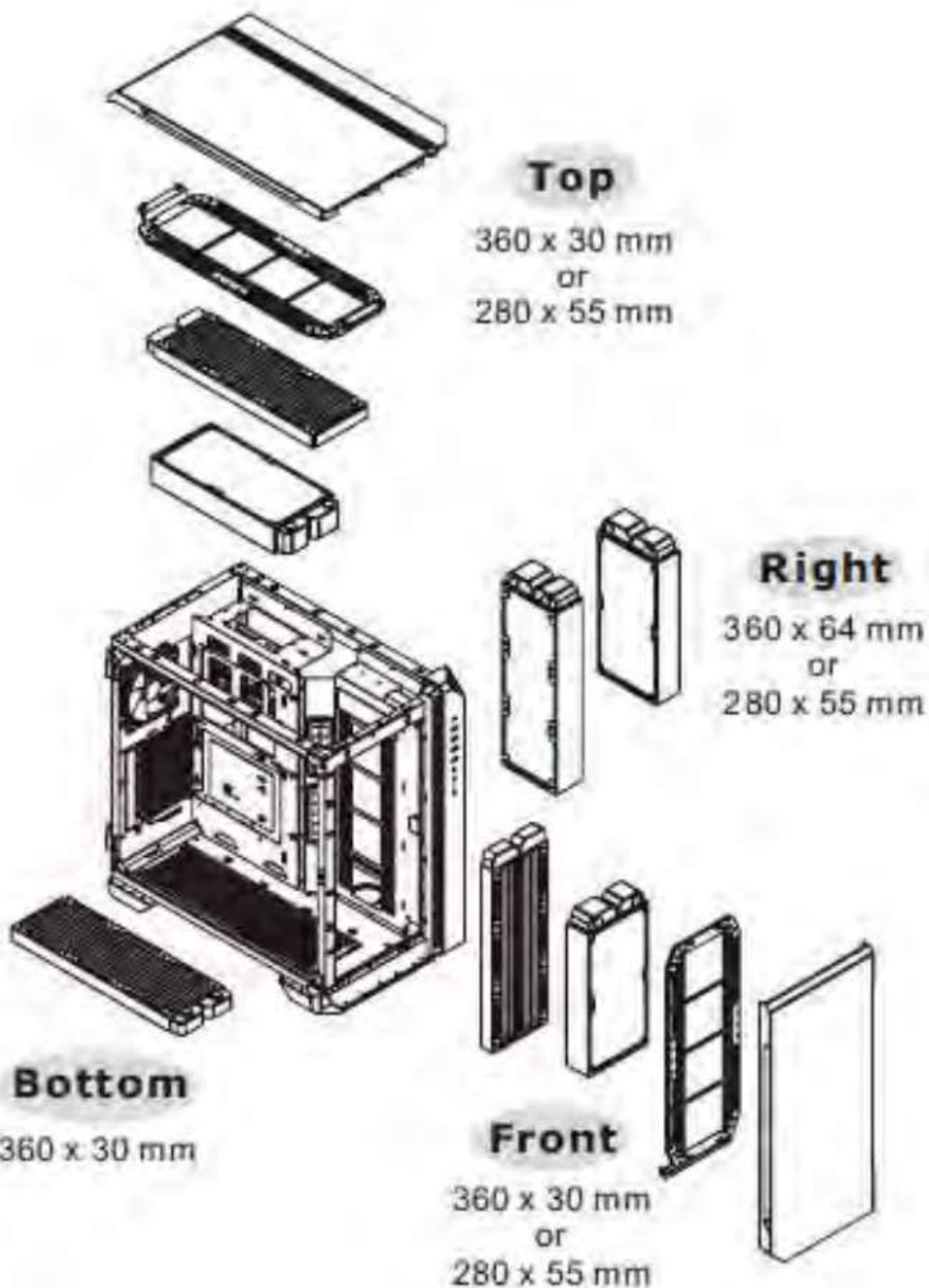
•The Cooling System – Air Cooling



Thermaltake View 51 TG ARGB Full tower

•The Cooling System – DIY Liquid Cooling (Optional)

※ The Radiators are recommended to mount inside the chassis.



Thermaltake View 51 TG ARGB Full tower

• Compatibility List

Fan Compatibility List			
	120 mm	140 mm	200 mm
Front	3	3	2
Top	3	3	2
Rear	1	-	-
Right	3	2	-
Bottom	3	-	-

Thermaltake Compatible Fan			
	120 mm	140 mm	200 mm
PURE FAN Series	●	●	●
Riing FAN Series	●	●	●

Radiator Compatibility List					
	120 mm	240 mm	360 mm	140 mm	280 mm
Front	●	●	●	●	●
Top	●	●	●	●	●
Right	●	●	●	●	●
Bottom	●	●	●	-	-

All-in-One Compatibility List (Water 3.0 and Floe series)

	Performer	Pro	240 Series	360 Series	140 Series	280 Series
Front	●	●	●	●	●	●
Top	●	●	●	●	●	●
Right	●	●	●	●	●	●