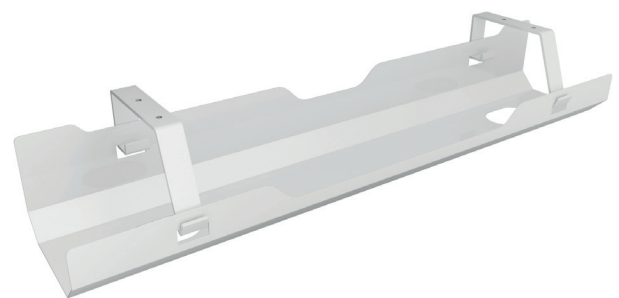




ICY BOX IB-EWA100W-CM

Cable management tray for desks



Key features

- Large storage capacity
- For extension cables, sockets, power supply units, etc.
- Open design for easy access
- Easy installation
- Powder-coated steel

Packing content

IB-EWA100W-CM, accessory kit,
quick installation guide

Solid construction

The IB-EWA100W-CM is a solidly manufactured accessory for your workplace cabling. No plastic that bends under higher loads or over time, but powder-coated metal is used here. This means that all cables are well stored and the construction holds.



More storage space – more neatness

Due to the open construction, the cable tray can be easily attached to the underside of the desk and thus offers the optimal storage space for extension cables, sockets and the like. As both ends of the tray are open, it makes it easier to stow or lay cables.

Technical data

Model IB-EWA100W-CM
Article no. 60877
EAN 4250078172109
Colour White
Material Steel

Logistical data

Packing unit: 12 pcs./carton
Total weight: 16.340 kg/carton
Gross weight (with packing): 1.260 kg
Net weight: 0.772 kg

Dimension/carton: 624x388x394 mm
Dimension (with packing): 610x125x90 mm
Dimension of article: 610x125x90 mm
Country of origin: China