

IGP-201IT & IGP-203IT

Quick Installation Guide

05-2025 / V1.0

Edimax Technology Co., Ltd.

No. 278, Xinhua 1st Rd., Neihu Dist., Taipei City, Taiwan

Email: support@edimax.com.tw

Edimax Technology Europe B.V.

Fijenhof 2, 5652 AE Eindhoven, The Netherlands

Email: support@edimax.nl

Edimax Computer Company

530 Technology Drive Suite 100, Irvine, CA 92618, USA

Email: support@edimax.us

Contents

- I. Product Information.....1**
 - I-1. Package Contents1
 - I-2. Hardware Interface (IGP-203IT)2
 - I-3. LED Status (IGP-203IT).....2
 - I-4. Hardware Interface (IGP-201IT)3
 - I-5. LED Status (IGP-201IT).....3
- II. Installation4**
 - II-1. Mounting the PoE Injector4
 - II-2. Powering on the PoE Injector.....6
 - II-2-1. Wiring Power Inputs6
 - II-3. Link to the Network.....7
 - II-4. Connecting to Powered Device (PD)8
- III. More Information9**
- IV. Safety Instructions9**

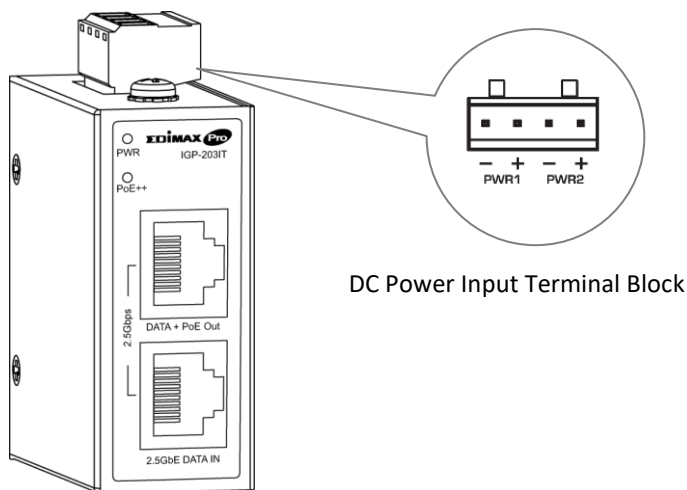
I. Product Information

- **IGP-201IT:** Industrial 2.5 Gigabit Din-Rail 802.3at 30W PoE+ Injector
- **IGP-203IT:** Industrial 2.5 Gigabit Din-Rail 802.3bt 90W PoE++ Injector

Edimax Industrial 2.5 Gigabit Din-Rail PoE Injectors that not only deliver a cost-effective solution for power distribution, but also provide a seamless way of deployment on the existing LAN infrastructure

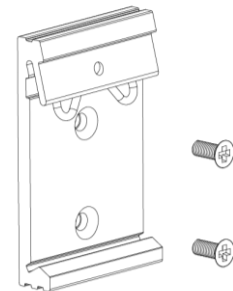
An ideal solution for industrial networks such as automotive, factory automation, oil and gas, mining, military, transportation, substation, energy and outdoor applications of railways, roads, tunnels, smart cities, city surveillance and traffic monitoring.

I-1. Package Contents

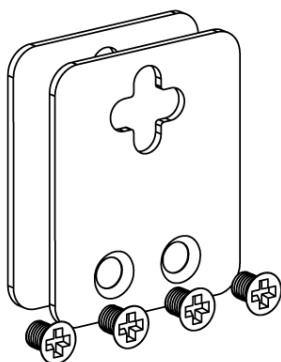


IGP-203IT or IGP-201IT

(DC Power Input Terminal Block Included)



DIN-Rail Mounting Kit



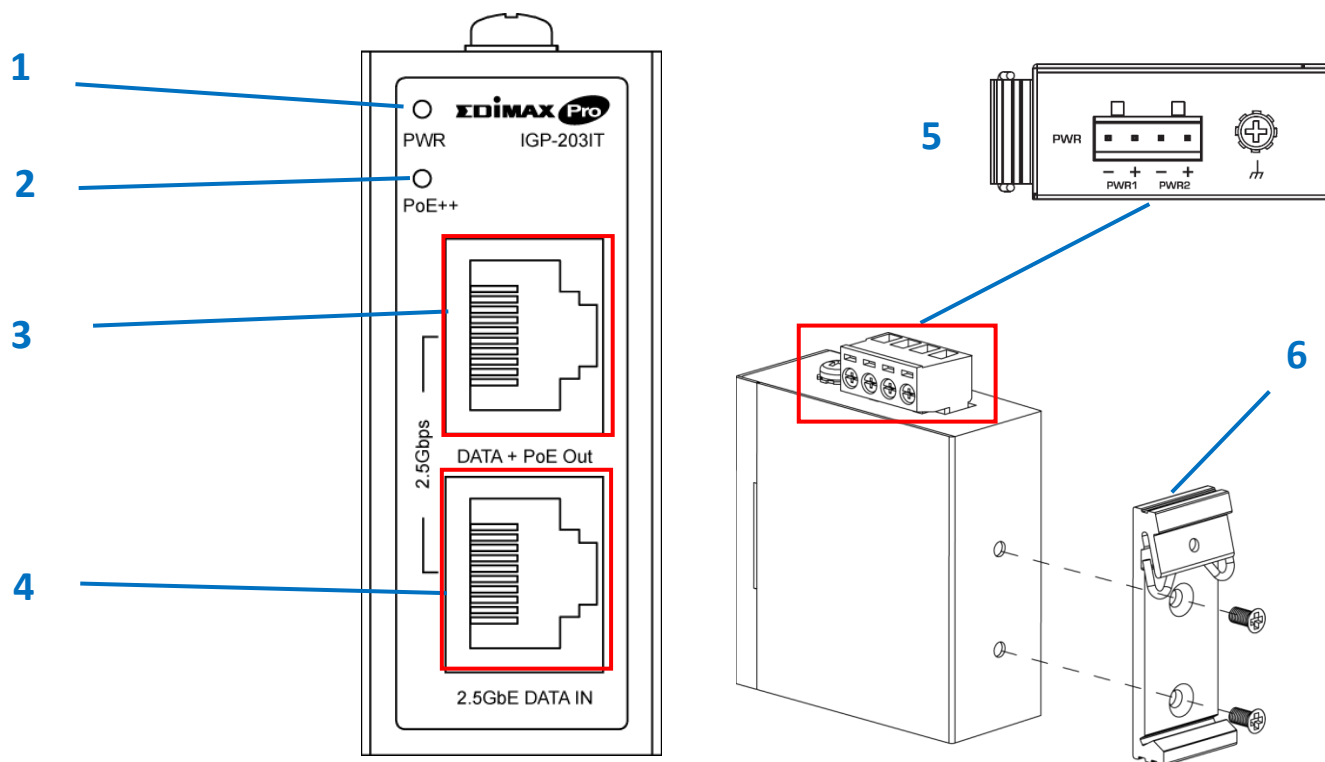
Wall Mount Kit



Quick Installation Guide

I-2. Hardware Interface (IGP-203IT)

Industrial 2.5 Gigabit Din-Rail 802.3bt 90W PoE+ Injector



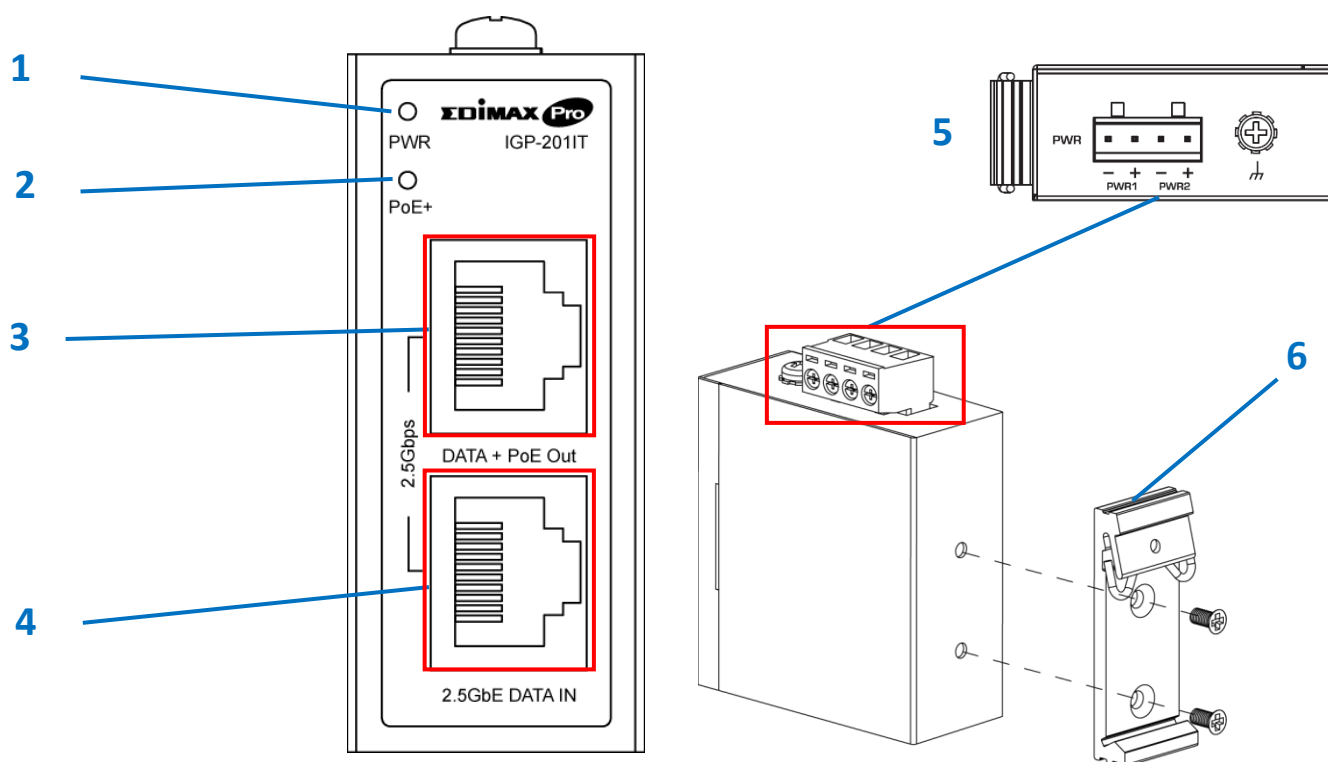
No.	Description
1	LED (PWR On/Off)
2	LED (PoE PWR Output On/Off)
3	2.5GbE LAN Port(Data +PoE Out)
4	2.5GbE LAN Port(Data Input)
5	Power1/Power2 Terminal Block; Grounding Screw
6	DIN-Rail Mounting Kit or Wall Mount Kit

I-3. LED Status (IGP-203IT)

LED	Color	Status	Description
PWR	Green	On	IGP-203IT is powered on
		Off	IGP-203IT is disconnected or failed
PoE++	Green	On	PoE power output on
		Off	PoE power output off or failed

I-4. Hardware Interface (IGP-201IT)

Industrial 2.5 Gigabit Din-Rail 802.3at 30W PoE+ Injector



No.	Description
1	LED (PWR On/Off)
2	LED (PoE PWR Output On/Off)
3	2.5GbE LAN Port(Data +PoE Out)
4	2.5GbE LAN Port(Data Input)
5	Power1/Power2 Terminal Block; Grounding Screw
6	DIN-Rail Mounting Kit or Wall Mount Kit

I-5. LED Status (IGP-201IT)

LED	Color	Status	Description
PWR	Green	On	IGP-201IT is powered on
		Off	IGP-201IT is disconnected or failed
PoE+	Green	On	PD is powered on
		Off	PD is disconnected or failed

II. Installation

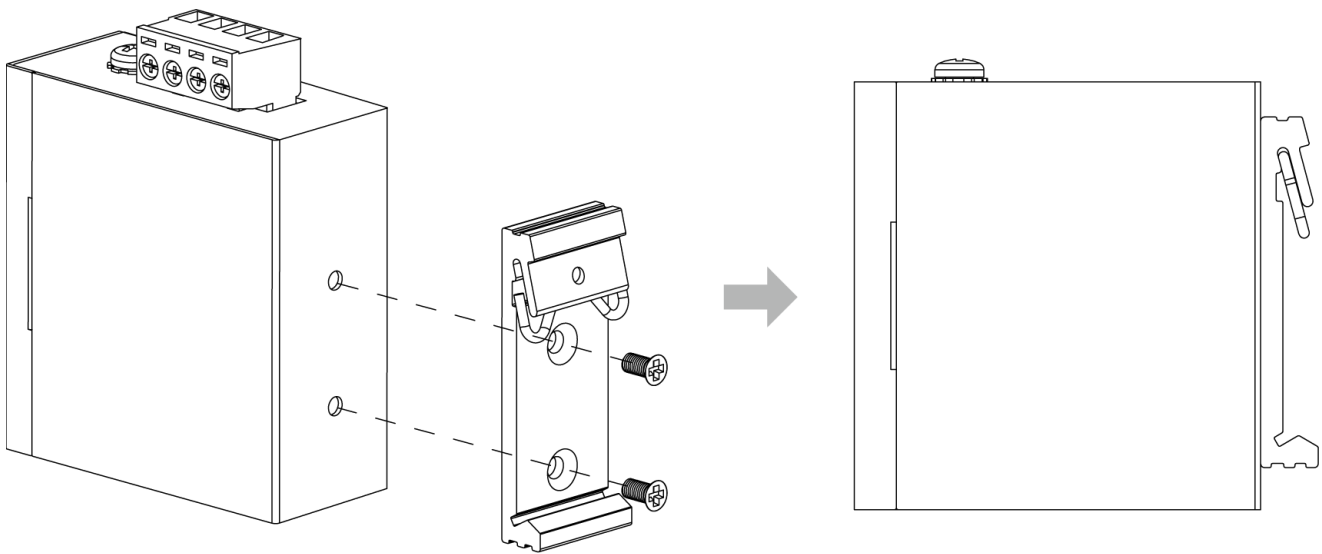
II-1. Mounting the PoE Injector

The industrial PoE Injector can be wall-mounted or DIN-Rail mounted

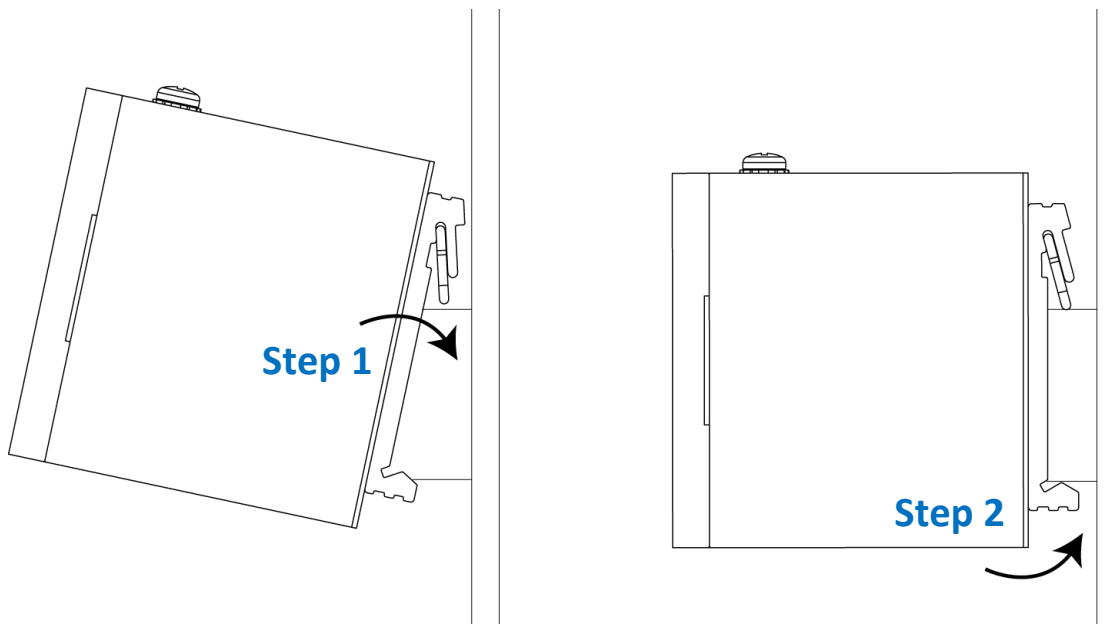
Din-Rail Mount

Follow bellow instruction for DIN-Rail mounting.

1. Attach the DIN-rail mount bracket to the PoE Injector and tighten the screws.



2. Follow the steps below to mount the PoE Injector on the DIN-Rail track.



STEP1. Insert the upper end of the DIN-Rail mounting bracket into the DIN-Rail track from its upper side.

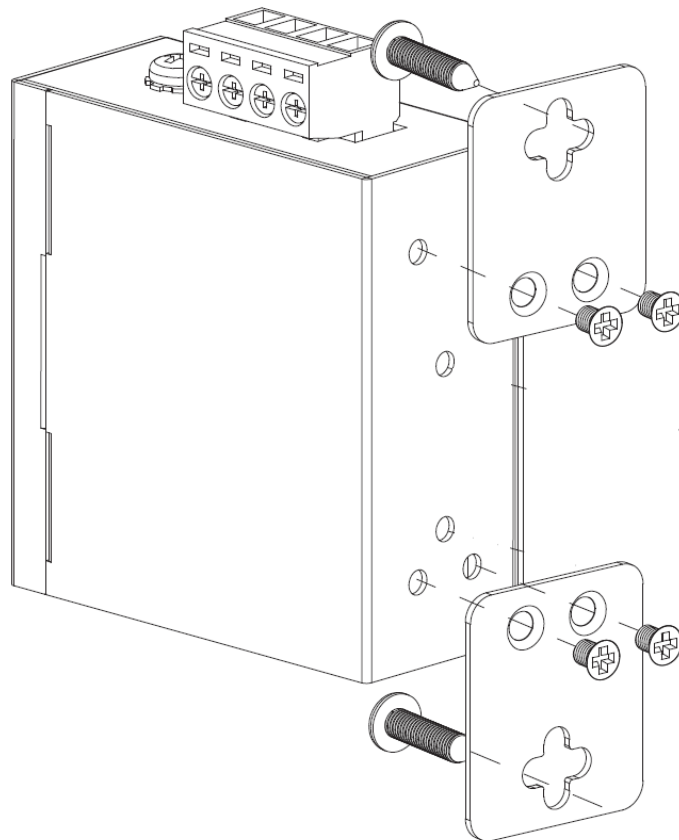
STEP2. Lightly push the bottom of the DIN-Rail mounting bracket into the track.

Check if the DIN-Rail mounting bracket is tightly attached to the track

Wall Mount

Follow bellow instruction for wall mounting.

1. Attach the wall mount bracket to the PoE Injector and tighten the screws.



II-2. Powering on the PoE Injector

IGP-203IT/ IGP-201IT to be powered by a DIN-Rail DC Power Supply

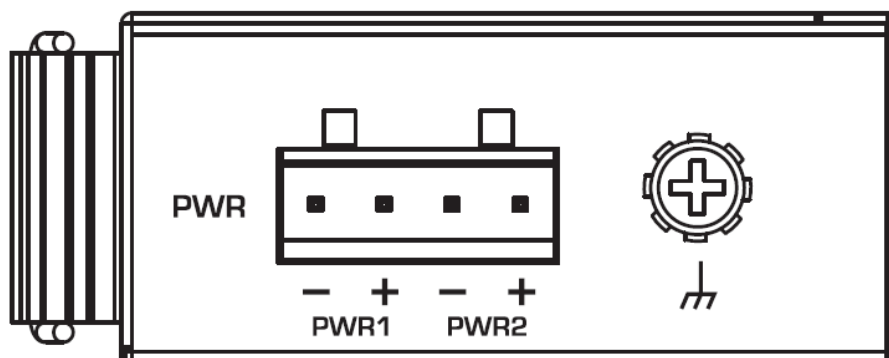
Note:

1. DIN-Rail Power Supply is NOT included in the package content.
2. DIN-Rail Power Supply Specifications recommendation:

Power Supply For	Output Voltage, Output Current	Output Power	Operating Temperature:
IGP-203IT	DC48-55V, 2A (or above)	100 Watts (or above)	-25~70°C or better
IGP-201IT	DC48-55V, 0.8A (or above)	35 Watts (or above)	

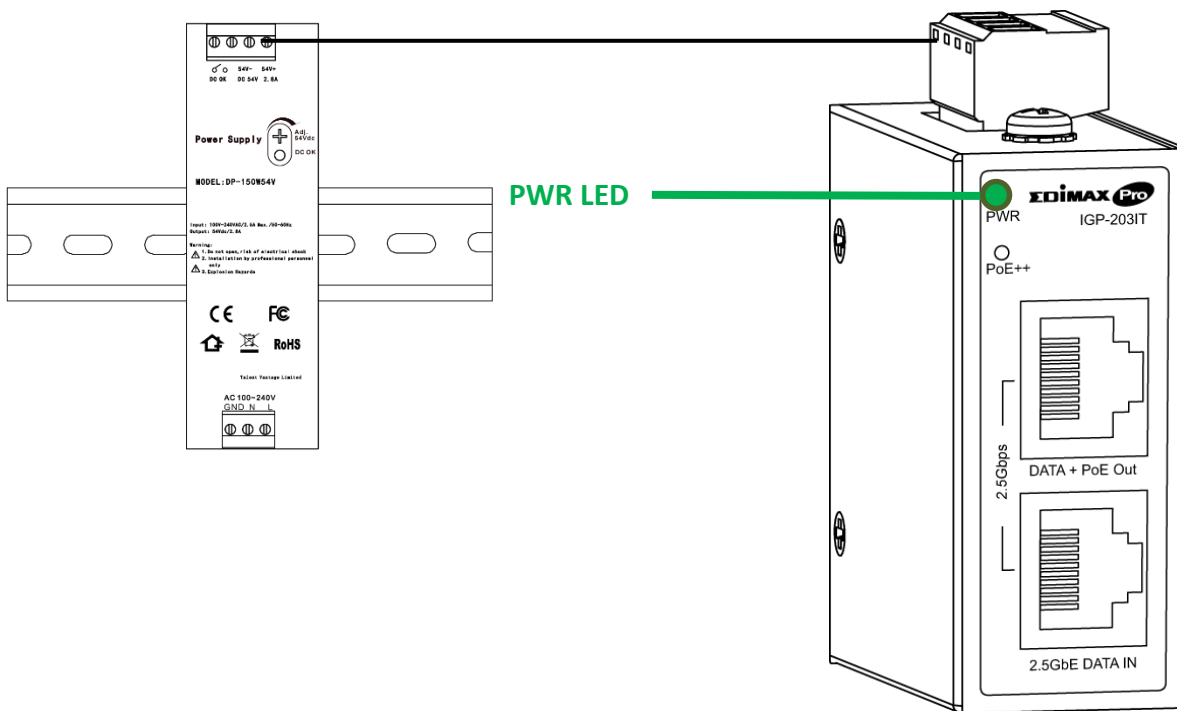
II-2-1. Wiring Power Inputs

IGP-203IT / IGP-201IT Supported power redundancy (PWR1 and PWR2). In case, one of the power supply fails, the IGP-201IT/IGP-203IT will keep operating as usual, and hence guarantees a constant power source for the systems.



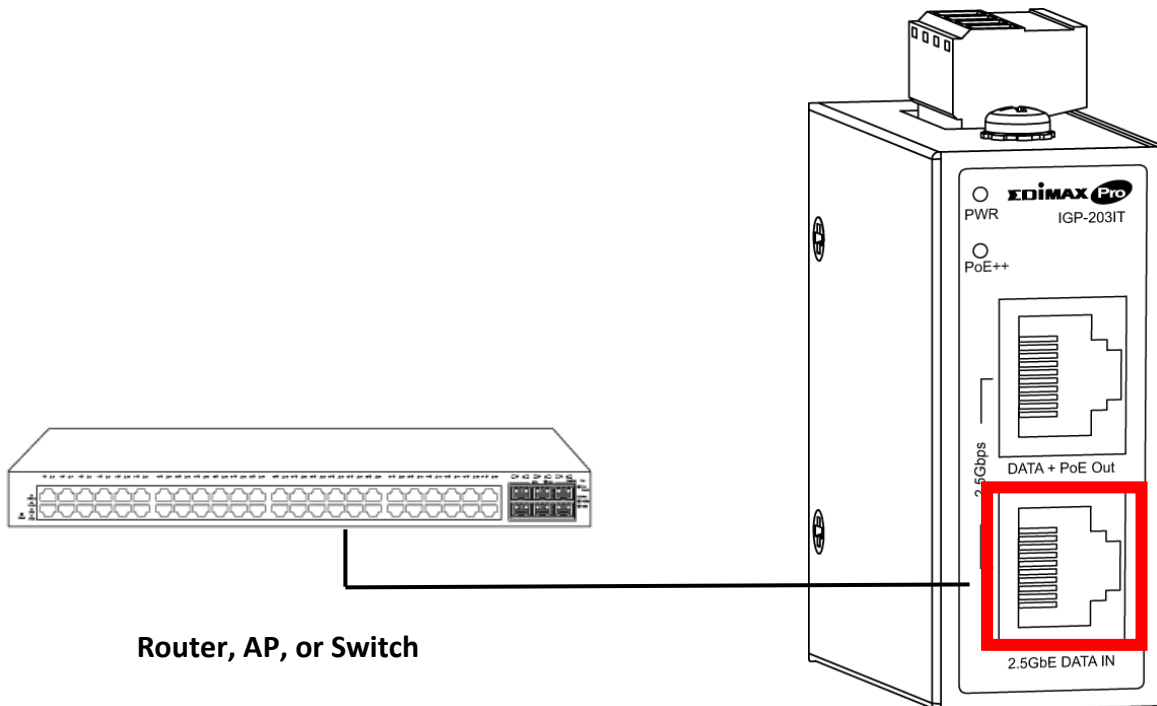
1. Insert the Negative / Positive DC wires into the PWR1 (V1-,V1+) terminals respectively. Tighten the screws to prevent the wires from loosening.
2. **Redundant Power:** Insert the Negative / Positive DC wires into the PWR2 (V2-,V2+) terminals respectively. Tighten the screws to prevent the wires from loosening.

Note: Make sure that the PWR LED is ON (Green).



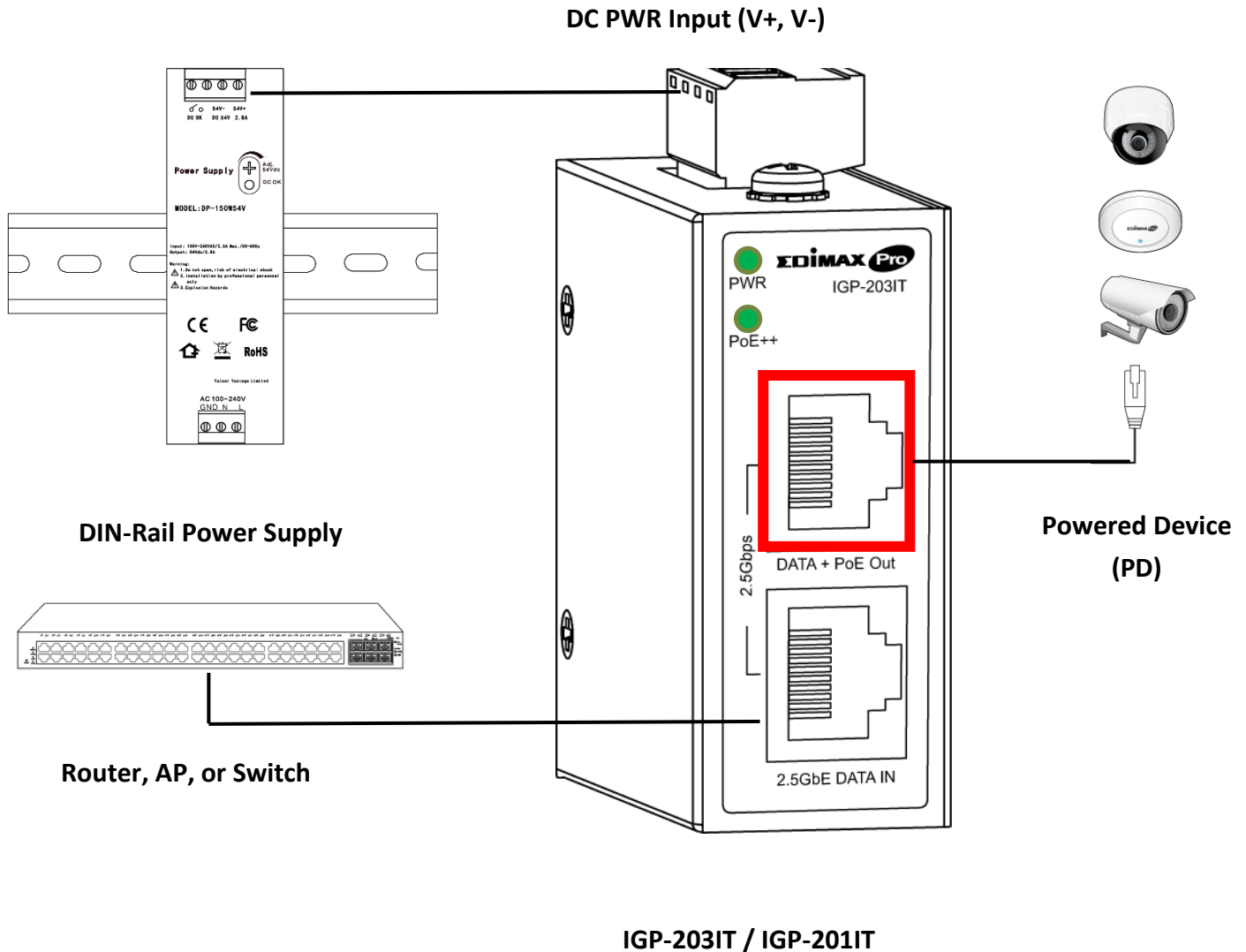
II-3. Link to the Network

Plug the standard Cat5e or above Ethernet cable into the “**2.5GbE DATA IN**” LAN port, and connect it to a LAN port of the router/AP or switch.



II-4. Connecting to Powered Device (PD)

Connect the “**DATA + PoE Out**” to end nodes using a standard Cat5e or above Ethernet cable as shown in the illustration below and check the LEDs to confirm the connections are established. The installation procedures have been completed.



Note: Make sure that the PoE++ (or PoE+) LED is ON (Green).

LED	Color	Status	Description
PoE++ or PoE+	Green	On	PD is powered on
		Off	PD is disconnected or failed

III. More Information

For detailed instructions, you can find user manual and all supporting documents from the link below or via the QR code:

<https://www.edimax.com/download/>

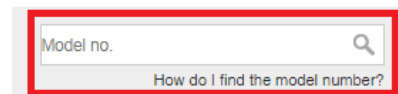


Please search the **model number** to enter the referred page.

Download

To select your product and find related download materials, enter the model number into the search box on the right side or follow the simple steps below:

*Feel free to contact us anytime if you need help or if you can't find your product.

A screenshot of a web search interface. It features a search bar with the placeholder text 'Model no.' and a magnifying glass icon on the right. Below the search bar, there is a link that reads 'How do I find the model number?'. The entire search area is highlighted with a red rectangular border.

IV. Safety Instructions

The following general safety guidelines are provided to help ensure your own personal safety and protect your product from potential damage. Remember to consult the product user instructions for more details.

- This product is designed for indoor use only.
- Static electricity can be harmful to electronic components. Discharge static electricity from your body (i.e. touching grounded bare metal) before touching the product.
- The device contains no user serviceable parts. Do not attempt to service the product and never disassemble the product.
- Do not spill food or liquid on your product and never push any objects into the openings of your product.
- Do not use this product near water, areas with high humidity, or condensation.
- Keep the product away from radiators and other heat sources.
- This device is not designed to be operated by children.
- Always unplug the product from mains power before cleaning and use a dry lint free cloth only.

COPYRIGHT

Copyright © Edimax Technology Co., Ltd. all rights reserved. No part of this publication may be reproduced, transmitted, transcribed, stored in a retrieval system, or translated into any language or computer language, in any form or by any means, electronic, mechanical, magnetic, optical, chemical, manual or otherwise, without the prior written permission from Edimax Technology Co., Ltd.

Edimax Technology Co., Ltd. makes no representations or warranties, either expressed or implied, with respect to the contents hereof and specifically disclaims any warranties, merchantability, or fitness for any particular purpose. Any software described in this manual is sold or licensed as is. Should the programs prove defective following their purchase, the buyer (and not this company, its distributor, or its dealer) assumes the entire cost of all necessary servicing, repair, and any incidental or consequential damages resulting from any defect in the software. Edimax Technology Co., Ltd. reserves the right to revise this publication and to make changes from time to time in the contents hereof without the obligation to notify any person of such revision or changes.

The product you have purchased and the setup screen may appear slightly different from those shown in this QIG. The software and specifications are subject to change without notice. Please visit our website www.edimax.com for updates. All brand and product names mentioned in this manual are trademarks and/or registered trademarks of their respective holders.

Federal Communication Commission Interference Statement

This equipment has been tested and found to comply with the limits for a Class A digital device, pursuant to Part 15 of the FCC Rules. These limits are designed to provide reasonable protection against harmful interference when the equipment is operated in a commercial environment. This equipment generates, uses, and can radiate radio frequency energy and, if not installed and used in accordance with the instruction manual, may cause harmful interference to radio communications. Operation of this equipment in a residential area is likely to cause harmful interference in which case the user will be required to correct the interference at his own expense.

FCC Radiation Exposure Statement

This device complies with FCC radiation exposure limits set forth for an uncontrolled environment and it also complies with Part 15 of the FCC RF Rules. This equipment must be installed and operated in accordance with provided instructions and the antenna(s) used for this transmitter must be installed to provide a separation distance of at least 20 cm from all persons and must not be co-located or operating in conjunction with any other antenna or transmitter. End-users and installers must be provided with antenna installation instructions and consider removing the no-collocation statement.

This device complies with Part 15 of the FCC Rules. Operation is subject to the following two conditions:

- (1) this device may not cause harmful interference, and
- (2) this device must accept any interference received, including interference that may cause undesired operation.

Caution!

Any changes or modifications not expressly approved by the party responsible for compliance could void the user's authority to operate the equipment.

R&TTE Compliance Statement

This equipment complies with all the requirements of DIRECTIVE 2014/30/EU OF THE EUROPEAN PARLIAMENT AND THE COUNCIL of March 9, 1999 on radio equipment and telecommunication terminal equipment and the mutual recognition of their conformity (R&TTE). The R&TTE Directive repeals and replaces in the directive 98/13/EEC (Telecommunications Terminal Equipment and Satellite Earth Station Equipment) As of April 8, 2000. Warning: Operation of this equipment in a residential environment could cause radio interference.

Safety

This equipment is designed with the utmost care for the safety of those who install and use it. However, special attention must be paid to the dangers of electric shock and static electricity when working with electrical equipment. All guidelines of this and of the computer manufacture must therefore be allowed at all times to ensure the safe use of the equipment.

EU Countries Intended for Use

The ETSI version of this device is intended for home and office use in Austria, Belgium, Bulgaria, Croatia, Cyprus, Czech, Denmark, Estonia, Finland, France, Germany, Greece, Hungary, Ireland, Italy, Latvia, Lithuania, Luxembourg, Malta, Netherlands, Poland, Portugal, Romania, Slovakia, Slovenia, Spain, Sweden, Turkey, and United Kingdom. The ETSI version of this device is also authorized for use in EFTA member states: Iceland, Liechtenstein, Norway, and Switzerland.

EU Countries Not Intended for Use

None

EU Declaration of Conformity

- English:** This equipment is in compliance with the essential requirements and other relevant provisions of Directive 2014/30/EU.
- Français:** Cet équipement est conforme aux exigences essentielles et autres dispositions de la directive 2014/30/EU.
- Čeština:** Toto zařízení je v souladu se základními požadavky a ostatními příslušnými ustanoveními směrnic 2014/30/EU.
- Polski:** Urządzenie jest zgodne z ogólnymi wymaganiami oraz szczególnymi warunkami określonymi Dyrektywą UE 2014/30/EU.
- Română:** Acest echipament este în conformitate cu cerințele esențiale și alte prevederi relevante ale Directivei 2014/30/EU.
- Русский:** Это оборудование соответствует основным требованиям и положениям Директивы 2014/30/EU.
- Magyar:** Ez a berendezés megfelel az alapvető követelményeknek és más vonatkozó irányelveknek (2014/30/EU).
- Türkçe:** Bu cihaz 2014/30/EU. direktifleri zorunlu istekler ve diğer hükümlerle ile uyumludur.
- Українська:** Обладнання відповідає вимогам і умовам директиви 2014/30/EU.
- Slovenčina:** Toto zariadenie spĺňa základné požiadavky a ďalšie príslušné ustanovenia smerníc 2014/30/EU.
- Deutsch:** Dieses Gerät erfüllt die Voraussetzungen gemäß den Richtlinien 2014/30/EU.
- Español:** El presente equipo cumple los requisitos esenciales de la Directiva 2014/30/EU.
- Italiano:** Questo apparecchio è conforme ai requisiti essenziali e alle altre disposizioni applicabili della Direttiva 2014/30/EU.
- Nederlands:** Dit apparaat voldoet aan de essentiële eisen en andere van toepassing zijnde bepalingen van richtlijn 2014/30/EU.
- Português:** Este equipamento cumpre os requisitos essenciais da Directiva 2014/30/EU.
- Norsk:** Dette utstyret er i samsvar med de viktigste kravene og andre relevante regler i Direktiv 2014/30/EU.
- Svenska:** Denna utrustning är i överensstämmelse med de väsentliga kraven och övriga relevanta bestämmelser i direktiv 2014/30/EU.
- Dansk:** Dette udstyr er i overensstemmelse med de væsentligste krav og andre relevante forordninger i direktiv 2014/30/EU.
- suomen kieli:** Tämä laite täyttää direktiivien 2014/30/EU. oleelliset vaatimukset ja muut asiaankuuluvat määräykset.



WEEE Directive & Product Disposal



At the end of its serviceable life, this product should not be treated as household or general waste. It should be handed over to the applicable collection point for the recycling of electrical and electronic equipment, or returned to the supplier for disposal.

Declaration of Conformity

We, Edimax Technology Co., Ltd., declare under our sole responsibility, that the equipment described below complies with the requirements of the European R&TTE directives.

Equipment: 1-port 2.5Giga RJ45 30W PoE Injector
Model No.: IGP-201IT

The following European standards for essential requirements have been followed:

Directives 2014/30/EU

EMC : EN 55032:2015/A1:2020
EN 55035:2017/A11:2020
EN IEC 61000-6-4:2019
EN IEC 61000-6-2:2019
Safety (LVD) : EN IEC 62368-1:2020+A11:2020

Edimax Technology Europe B.V.

Fijenhof 2,
5652 AE Eindhoven,
The Netherlands

Date & Place of Issue: 29/May/2025, Eindhoven

Signature: 

Printed Name: David Huang

Title: Director

a company of:

Edimax Technology Co., Ltd.
No. 278, Xinhua 1st Rd., Neihu Dist.,
Taipei City, Taiwan

Date & Place of Issue: 29/May/2025, Taipei

Signature: 

Printed Name: Hunter Chen

Title: Director



Declaration of Conformity

We, Edimax Technology Co., Ltd., declare under our sole responsibility, that the equipment described below complies with the requirements of the United Kingdom EMC and Safety directives.

Equipment: 1-port 2.5Giga RJ45 30W PoE Injector
Model No.: IGP-201IT

The following European standards for essential requirements have been followed:


Electromagnetic Compatibility Regulations 2016 (S.I. 2016/1091)

EMC : EN 55032:2015/A1:2020
EN 55035:2017/A11:2020
EN IEC 61000-6-4:2019
EN IEC 61000-6-2:2019
Safety (LVD) : EN IEC 62368-1:2020+A11:2020

Edimax Technology Europe B.V.

Fijenhof 2,
5652 AE Eindhoven,
The Netherlands

Date & Place of Issue: 29/May/2025, Eindhoven

Signature: 

Printed Name: David Huang

Title: Director

a company of:

Edimax Technology Co., Ltd.
No. 278, Xinhua 1st Rd., Neihu Dist.,
Taipei City, Taiwan

Date & Place of Issue: 29/May/2025, Taipei

Signature: 

Printed Name: Hunter Chen

Title: Director



Declaration of Conformity

We, Edimax Technology Co., Ltd., declare under our sole responsibility, that the equipment described below complies with the requirements of the European R&TTE directives.

Equipment: 1-port 2.5Giga RJ45 95W PoE Injector
Model No.: IGP-203IT

The following European standards for essential requirements have been followed:

Directives 2014/30/EU

EMC : EN 55032:2015/A1:2020
EN 55035:2017/A11:2020
EN IEC 61000-6-4:2019
EN IEC 61000-6-2:2019
Safety (LVD) : EN IEC 62368-1:2020+A11:2020

Edimax Technology Europe B.V.


Fijenhof 2,

5652 AE Eindhoven,

The Netherlands

Date & Place of Issue: 29/May/2025, Eindhoven

Signature:



Printed Name: David Huang

Title: Director

a company of:

Edimax Technology Co., Ltd.

No. 278, Xinhua 1st Rd., Neihu Dist.,

Taipei City, Taiwan

Date & Place of Issue: 29/May/2025, Taipei

Signature:



Printed Name: Hunter Chen

Title: Director



Declaration of Conformity

We, Edimax Technology Co., Ltd., declare under our sole responsibility, that the equipment described below complies with the requirements of the United Kingdom EMC and Safety directives.

Equipment: 1-port 2.5Giga RJ45 95W PoE Injector
Model No.: IGP-203IT

The following European standards for essential requirements have been followed:

Electromagnetic Compatibility Regulations 2016 (S.I. 2016/1091)

EMC : EN 55032:2015/A1:2020
EN 55035:2017/A11:2020
EN IEC 61000-6-4:2019
EN IEC 61000-6-2:2019
Safety (LVD) : EN IEC 62368-1:2020+A11:2020

Edimax Technology Europe B.V.
Fijenhof 2,
5652 AE Eindhoven,
The Netherlands

Date & Place of Issue: 29/May/2025, Eindhoven

Signature: 

Printed Name: David Huang

Title: Director

a company of:

Edimax Technology Co., Ltd.
No. 278, Xinhua 1st Rd., Neihu Dist.,
Taipei City, Taiwan

Date & Place of Issue: 29/May/2025, Taipei

Signature: 

Printed Name: Hunter Chen

Title: Director

